

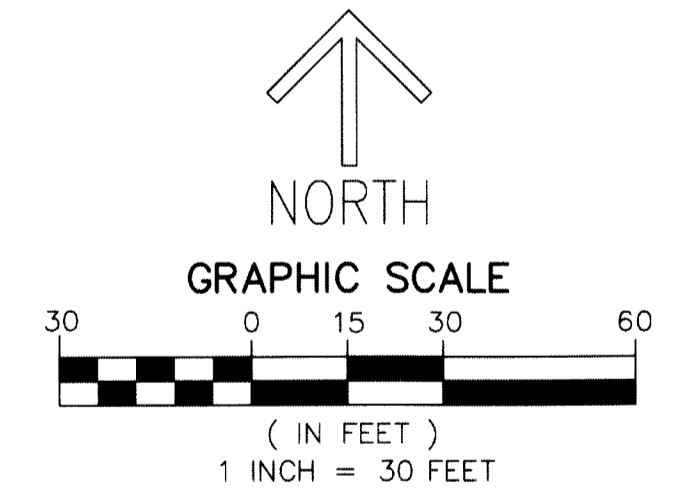
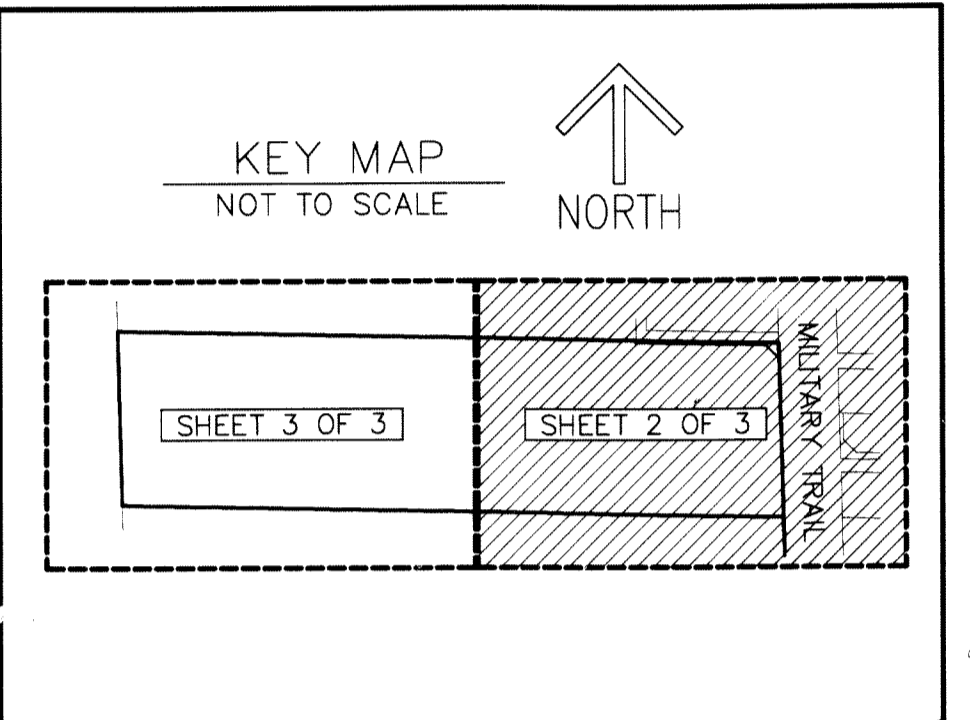
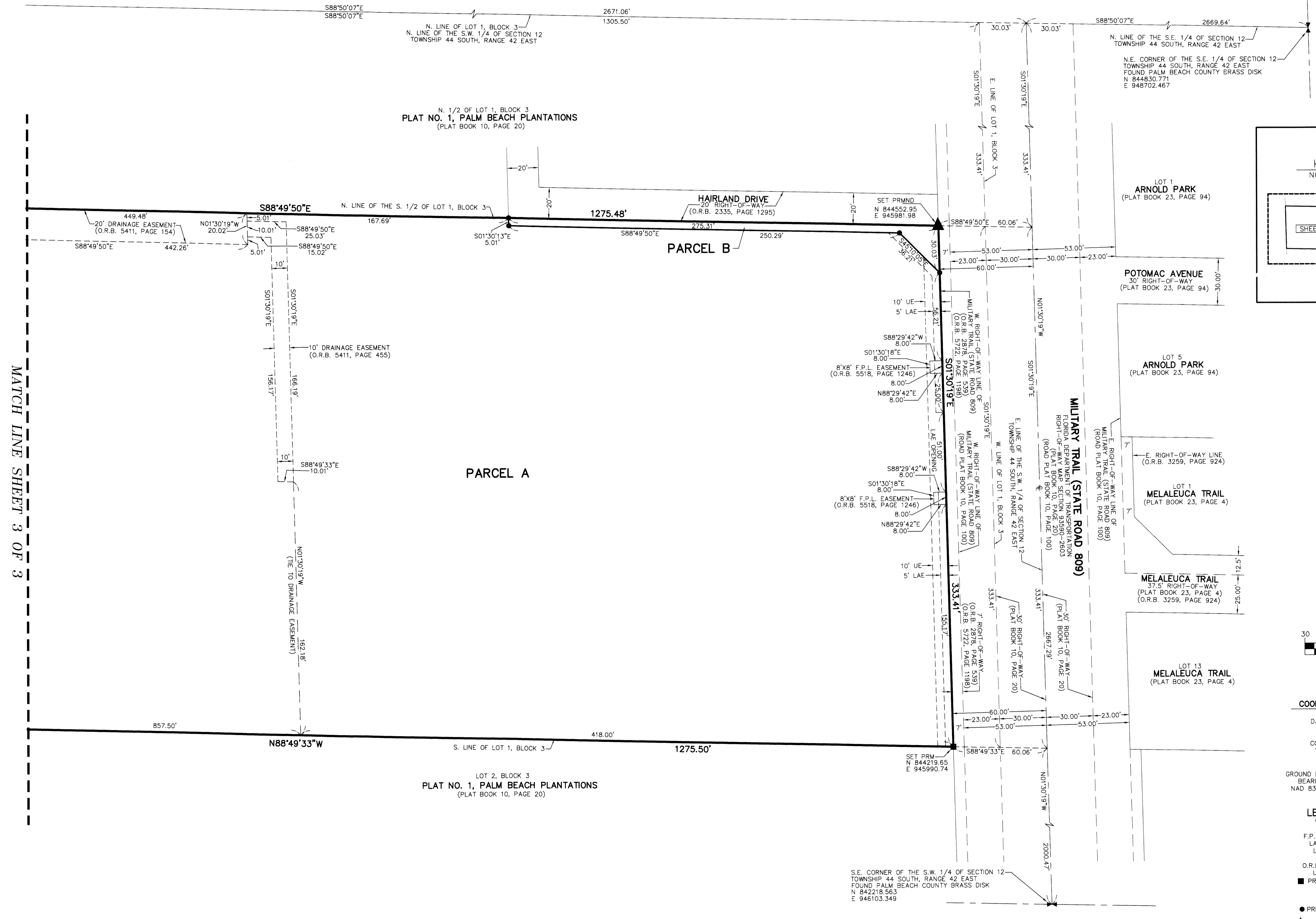
THIS INSTRUMENT PREPARED BY  
 DAVID P. LINDLEY  
 OF  
**CAULFIELD and WHEELER, INC.**  
 SURVEYORS - ENGINEERS - PLANNERS  
 7900 GLADES ROAD, SUITE 100  
 BOCA RATON, FLORIDA 33434 - (561)392-1991  
 CERTIFICATE OF AUTHORIZATION NO. LB3591

# DON COOK MOTORS

BEING A REPLAT OF A PORTION OF THE SOUTH ONE-HALF OF LOT 1, BLOCK 3,  
 PLAT NO. 1, PALM BEACH PLANTATIONS,  
 AS RECORDED IN PLAT BOOK 10, PAGE 20 OF THE PUBLIC RECORDS OF PALM BEACH COUNTY, FLORIDA,  
 LYING IN SECTION 12, TOWNSHIP 44 SOUTH, RANGE 42 EAST, PALM BEACH COUNTY, FLORIDA

# 146

SHEET 2 OF 3



**NOTES**  
**COORDINATES, BEARINGS AND DISTANCES**  
 COORDINATES SHOWN ARE GRID  
 DATUM = NAD 83 (90/98 ADJUSTMENT)  
 ZONE = FLORIDA EAST  
 LINEAR UNIT = US SURVEY FEET  
 COORDINATE SYSTEM 1983 STATE PLANE  
 TRANSVERSE MERCATOR PROJECTION  
 ALL DISTANCES ARE GROUND  
 SCALE FACTOR = 1.0000375  
 GROUND DISTANCE X SCALE FACTOR = GRID DISTANCE  
 BEARINGS AS SHOWN HEREON ARE GRID DATUM,  
 NAD 83 (90/98 ADJUSTMENT), FLORIDA EAST ZONE.

**LEGEND/ABBREVIATIONS**  
 C - CENTERLINE  
 E - EASTING  
 F.P.L. - FLORIDA POWER & LIGHT CO.  
 LAE - LIMITED ACCESS EASEMENT  
 LB - LICENSED BUSINESS  
 N - NORTHING  
 O.R.B. - OFFICIAL RECORD BOOK  
 UE - UTILITY EASEMENT  
 ■ PRM - DENOTES PERMANENT REFERENCE MONUMENT  
 4" x 4" x 24" CONCRETE MONUMENT WITH  
 ALUMINUM DISK STAMPED "C&W PRM LB3591"  
 UNLESS OTHERWISE DESCRIBED  
 ● PRM - DENOTES MONUMENT SET 5/8" IRON ROAD AND  
 CAP STAMPED "C&W LB3591"  
 ▲ PRM - DENOTES PERMANENT REFERENCE MONUMENT  
 SET NAIL AND DISK STAMPED "PRM" LB 3591

MATCH LINE SHEET 3 OF 3